



Mobile Printers

# MX30 / MX30i

A Portable Light Weight Design  
MX30 & MX30i is Your Best Pal in Mobile Life.

GoDEX MX30 & MX30i Mobile Printer is powered by Lithium-ion battery for longer uptime, along with water / dust resistant and shatterproof design. MX30i has an embedded OLED panel to display messages. MX30 & MX30i series fit 1.5" to 3" label roll, which is a powerful tool for retail / storage / parking lot applications.



- Supports multiple label width & types.
- Drop & Fit label installation design.
- Intuitive OLED display with 3 buttons.
- Water and dust resistant meeting IP54 standard.
- Versatile interfaces with both wire (RS232 and USB) & wireless (Bluetooth and Wi-Fi) connectivity.

# GoDEX

# Specification

## MX30 / MX30i

### Mobile Printer

Model	MX30	MX30i
<b>Print Method</b>	Direct Thermal	
<b>Resolution</b>	203 dpi (8 dots/mm)	
<b>Print Speed</b>	Up to 4 IPS (101.6 mm/s)	
<b>Print Width</b>	2.8" (72 mm)	
<b>Print Length</b>	30" (~762 mm)	
<b>Processor</b>	32 Bit RISC CPU	
<b>Memory Flash</b>	128 MB Flash (60 MB for user storage)	
<b>SDRAM</b>	32 MB	
<b>Sensor Type</b>	Gap sensor , Fixed transmissive sensor , Fixed reflective sensor	
<b>Media Types</b>	Direct Thermal receipt, anti-UV receipt, gap label, left side alignment Inter-label gap size from 2 mm to 4 mm. 3 mm preferred	
<b>Width</b>	Max. 3.15" (80 mm), Min. 1.5" (38.1 mm)	
<b>Thickness</b>	Min 0.0508 mm, Max 0.165 mm	
<b>Media roll Diameter</b>	Max. 2.35" (60 mm) on 0.5" (12.5 mm) core	
<b>Printer Language</b>	GPOS Emulations or EZPL / GZPL / GEPL Emulations	
<b>Software</b>	GoLabel (for EZPL only)	
<b>Label Design Software</b>	GoLabel (for EZPL only)	
<b>Driver</b>	MAC, Linux, Windows 2000 / XP / VISTA / Windows 7 / Windows 8.1	
<b>DLL</b>	Win CE, .NET, Android, Windows Mobile, Windows 2000 / XP / VISTA / Windows 7 / Windows 8.1	
<b>Resident Fonts</b>	6, 8, 10, 12, 14, 18, 24, 30, 16x26 and OCR A & B. 0°, 90°, 180°, 270° rotatable	
<b>Bitmap Fonts</b>	6, 8, 10, 12, 14, 18, 24, 30, 16x26 and OCR A & B. 0°, 90°, 180°, 270° rotatable	
<b>TTF Fonts</b>	CG Triumvirate™ (Bold / Italic / Underline ). 0°, 90°, 180°, 270° rotatable	
<b>Download Fonts</b>	90°, 180°, 270° rotatable, single characters 90°, 180°, 270° rotatable	
<b>Bitmap Fonts</b>	16x16, 24x24. Traditional Chinese (BIG-5), Simplified Chinese (GB2312), Japanese (S - JIS), Korean (KS - X1001)	
<b>Asian Fonts</b>	90°, 180°, 270° rotatable and 8 times expandable in horizontal and vertical directions	
<b>TTF Fonts</b>	90°, 180°, 270° rotatable	
<b>Barcodes</b>	1-D Bar codes	
	Code 39, Code 93, EAN 8 / 13 (add on 2 & 5), UPC A / E (add on 2 & 5), I 2 of 5 & I 2 of 5 with Shipping Bearer Bars, Codabar, Code 128 (subset A, B, C), EAN 128, RPS 128, UCC 128, UCC / EAN-128 K - Mart, Random Weight, Post NET, ITF 14, China Postal Code, HIBC, MSI, Plessey, Telepen, FIM, GS1 DataBar, German Post Code, Planet 11 & 13 digit, Japanese Postnet, I2 of 5 with human readable check digit, Standard 2 of 5, Industrial 2 of 5, Logmars, Code 11, Code 49, Cadablock	
	2-D Bar codes	
	PDF417, Datamatrix code, MaxiCode, QR code, Micro PDF417, Micro QR code and Aztec code.	
<b>Code Pages</b>	CODEPAGE 437, 850, 851, 852, 855, 857, 860, 861, 862, 863, 865, 866, 869, 737 WINDOWS 1250, 1251, 1252, 1253, 1254, 1255, 1257 Unicode UTF8 · UTF16BE · UTF16LE	
<b>Graphics</b>	Resident graphic file types are BMP and PCX, other graphic formats are downloadable from the software	
<b>Interfaces</b>	RS232 + USB 2.0 port, mini-B type connector Bluetooth 2.1 + EDR	
<b>Control Panel</b>	4 dual color LEDs for Power, Battery, Communication, Error status indication. 3 buttons for Power, Feed and BT functions	
<b>LCD Display</b>		Graphic OLED 128 x 64 dots with 3 buttons for Up, Down and Enter functions
<b>Power Adapter</b>	Switching power supply I/P: 100 / 240 V AC, 50 / 60 Hz, DC 9 V / 2.2 A	Switching power supply I/P: 100 / 240 V AC, 50 / 60 Hz, DC 9 V / 2.0 A
<b>Battery</b>	Rechargeable DC 7.4 V Lithium-ion battery, 2500 mAH or higher capacitance	
<b>Environment</b>	Operation Temperature 32 °F to 122 °F (0°C to 50°C) Storage Temperature -4 °F to 140 °F (-20°C to 60°C)	
<b>Humidity</b>	Operation 10 – 90 %, non - condensing. Storage 10 – 90 %, non - condensing.	
<b>IP Rating</b>	Intrusion Protection, IP42 requirement for case design, IP54 for protective case	
<b>Drop Level</b>	1.5 meter height	
<b>Agency Approvals</b>	CE EMC, FCC part 15B class B, FCC Part 15C, SRRC, NCC, CB, UL, cUL, Energy Star V2.0	
<b>Dimension</b>	Length 6.71" (170.63 mm) Height 3.11" (79 mm) Width 4.48" (114.01 mm)	
<b>Weight</b>	1.45 lbs (660 g), with battery	1.47 lbs (670 g), with battery
<b>Options</b>	USB cable RS-232 cable Li-ion battery 4-bay battery charger station Car charger adapter Protective case WiFi ( comply with IEEE 802.11b/g/n )	

\*\*Specifications are subject to change without notice. All company and/or product names are trademarks and/or registered trademarks of their respective owners.

Minimum print height and maximum print speed specification compliance can be dependent on non-standard material variables such as label type, thickness, spacing, liner construction, etc. Godex is pleased to test non-standard materials for minimum print height and maximum print speed capability.

# Applications

## Applications for Labels & Barcodes

MX30 & MX30i support label & barcode printings Anywhere and Anytime.



### Warehouses, Logistic & Transportation

Cross Docking, inventory management, receiving / shipping, work - in - process tracking, or related industrial applications.

### Retail

Content labels, receipts for registered mails, invoices & receipts, postage labels, etc.

### Parking Management

Parking receipt, parking ticket, and so on.

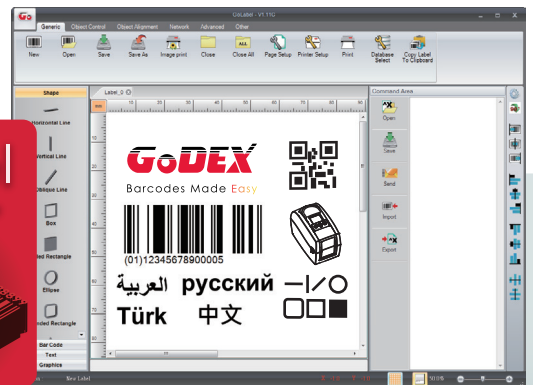


### LABEL DESIGN SOFTWARE

GoLabel Software / User Friendly

GoLabel is based on a WYSIWYG (what you see is what you get) user interface, makes everything so easy for you to create and print barcode labels. GoLabel is the first - choice label design software that you can't miss it!

Go visit [www.godexintl.com](http://www.godexintl.com) and download GoLabel to experience it!

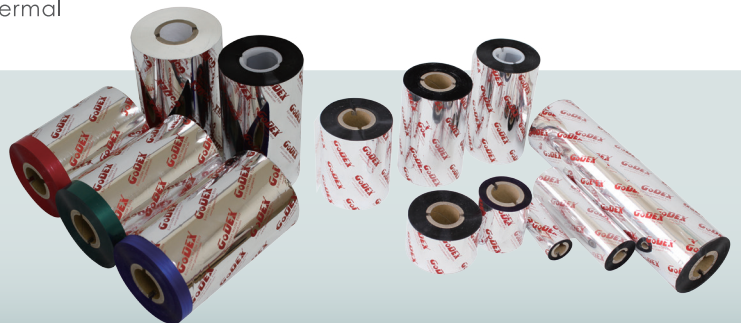


### RIBBONS

High quality original GoDEX thermal transfer ribbons

GoDEX offers premium thermal transfer ribbons that will fit most of your printing applications.

- Wax
- Wax / Resin
- Resin
- Near Edge



Godex International  
( Headquarters )  
Telephone : +886 2 2225 8580  
Contact us : infoGT@godexintl.com

Godex Americas  
Telephone : +1 805 987 5100  
Contact us : infoGA@godexintl.com

Godex China  
Telephone : +86 21 56651313  
Contact us : infoGC@godexintl.com

Godex Europe  
Telephone : +49 2193 53396 0  
Contact us : infoGE@godexintl.com